

*Cascade Forks – A Tradition Of Quality*



# Quality Forks When You Need Them



## Over 60 years of Quality, Expertise and Professionalism

Over the last few decades, the field of materials handling has developed into a highly sophisticated and vital part of all industries. Cascade has played a significant role in this growth from our beginnings as a small machine shop in the early 1940's to the leading global manufacturer that we are today, Cascade continues to grow as the premier supplier of lift truck forks, attachments and associated products.

## Manufacturing efficiency coupled with global production

Cascade operates state-of-the-art fork plants in locations worldwide: UK, Italy, Canada, USA and China. Forks are produced in many section sizes, lengths and mountings for lifting capacities up to 60 tons. High quantities, efficient production processes and global availability allow us to react to customer requirements with flexibility and speed with no compromise to the highest quality levels.

## Top Quality Forks – Worldwide

Only fully tested and approved materials are used in the manufacture of Cascade forks.



Guaranteed materials together with fully controlled processes result in forks that meet or exceed the latest in all national and international standards (such as ISO 2328 and ISO 2330 and ANSI ITSDF B56.1) with regards to mounting details, load, fatigue and impact tests.

Every Cascade fork is inspected at all welds and in the critical heel area, while our global quality system offers full traceability throughout the entire production history of each fork manufactured, from raw material through to

final inspection. Each fork is stamped with manufacturer's identification, specified capacity and load center, week of manufacture and production serial number. This traceability together with our strictly controlled processes, ensure that only forks of the highest quality reach our customers.

## Fast Lead Times... Highest Quality



### **Product Innovation – Designed by Cascade**

Cascade's lock pin assembly is evidence of our commitment to continually strive for product improvements that deliver benefits to the industry. The design ensures ease of fitting and movement of forks across the carriage while the "lift and twist" ergonomics of the pin kit provides a much more definitive "go/no-go" engagement of the pin into the carriage. This design also ensures the lock pin assembly hole in the hook is permanently sealed against dirt, grease and other contaminants reducing the possibility of the pin becoming inoperable. The geometry of the top hook, together with more defined weld contact areas between the sides of the hook and the back of the fork, offer greater strength and resistance to side forces. The correlation of hook and fork widths allows for easier and safer movement and storage of forks on pallets.

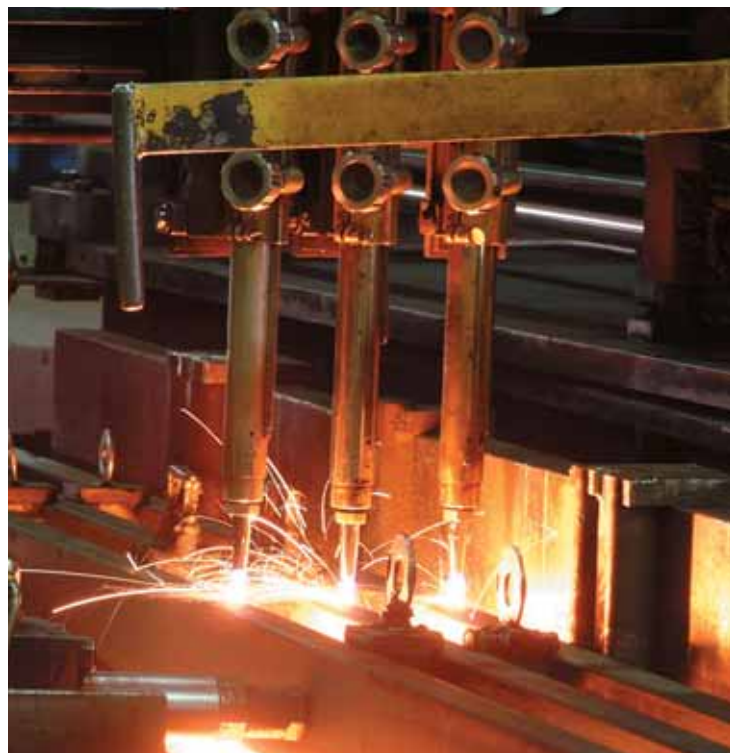
### **Give Us A Call – We're Ready To Help!**

For professional and experienced advice, contact our sales department today. We are committed to finding the best solution for your requirements. We look forward to hearing from you.

Contact us at:

Tel: 877 CASCADE (227.2233)

Fax: 519.763.1472



# The Complete Line of Forks Available From Cascade

## A Solution For Any Application

Cascade offers a wide range of standard forks, together with customized design specifications, stainless steel clad forks, brass clad forks, fork extensions – a solution for any application.

Standard ITA Fork



Pin-Type Fork



Bolt-On Fork



Hydraulic Attachment Fork



Quick Disconnect Fork



Spark Resistant Brass Clad Forks



Lumber Fork



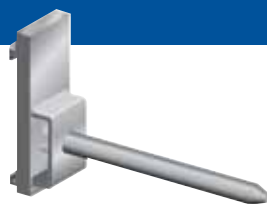
Inverted Fork



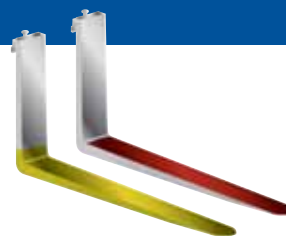
Folding Fork



Boom & Carpet Pole



Stainless Steel Clad and Slip Resistant Forks



Fork Extensions



Cascade Corporation • PO Box 20187 • Portland, OR 97294-0187 • USA • 800 CASCADE (227.2233) • Tel 503.669.6257 • Fax 800.693.3768 • Fax 503.669.6367  
Cascade Canada Ltd. • R.R. #3 Nicholas Beaver Industrial Park • P.O. Box 1508 • Guelph, Ontario N1H 6N9 • Canada • 877 CASCADE (227-2233) • Tel 519.763.3675 • Fax 519.763.1472