

Specifically designed for printers and newspaper publishers.

APPLICATIONS

Cascade's 25F Paper Roll Clamp is designed for newspaper publishers, printers and warehouses handling smaller rolls of newsprint, form and printing stock. The 25F is application rated and field proven for newsprint, forms and printing paper roll handling operations. Models are available with capacities up to 2,640 lbs. and roll diameters of 42", 45" and 51".

FEATURES

Reduced Roll Damage

- Proven contact pad shape and surface holds rolls securely
- Thin-arm profile with smooth-arm contour eases roll breakout and permits close stacking

Fast Roll Handling

- Continuous 360° rotation

Excellent Durability

- Unitized construction provides structural integrity in arms and frame
- Proven heavy-duty rotator drive train
- Drive group is protected by the base structure
- Pivot bushings are lube-free and provide longer service life

MODELS

Fixed frame/fixed short arm

- Good arm profile when handling rolls near maximum diameter

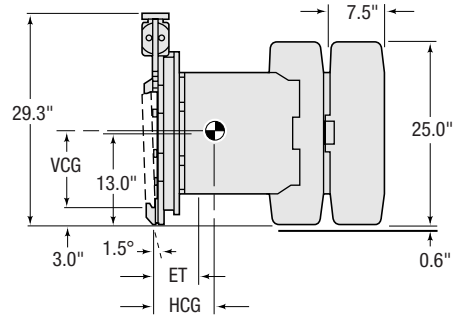
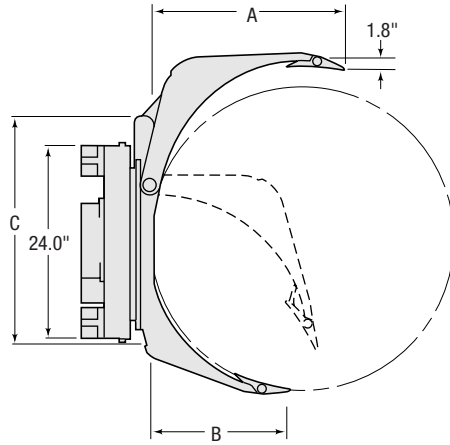
OPTIONS

- Wide variety of rubber, urethane and other pads are available for improved handling of certain papers



*Designed
for handling
small rolls of
newsprint,
form and
printing stock.*

25F PAPER ROLL CLAMP



Capacity @ Diameter	Roll Range	Short Arm Type	Catalog Order No.	Mtg. Class	Mtg. Angle ①	Min. Truck Carriage Width	Weight	Effective Thickness	Horizontal Ctr. of Gravity	Vertical Ctr. of Gravity	Long Arm Length	Short Arm Length	Frame Width
lbs@ inch kgs. @ mm							lbs kg	ET	HCG	VCG	A	B	C
2,640 @ 42" / 1,200 @ 1,065	10"-42"	Fixed	25F-RCF-02A	II	1.5°	25"	735 / 334	5.3"	8.3"	13"	26.9"	18.8"	31.3"
2,500 @ 45" / 1,135 @ 1,145	13"-45"	Fixed	25F-RCF-04A	II	1.5°	25"	755 / 343	5.3"	8.5"	13"	26.9"	20.3"	35.7"
2,200 @ 51" / 1,000 @ 1,295	16"-51"	Fixed	25F-RCF-06A	II	1.5°	25"	780 / 354	5.3"	8.7"	13"	31.1"	22.8"	37.1"

- ① 1.5° mounting provides reduced effective thickness (Lost Load) and ease in handling horizontal (bilge) rolls. 0° mounting must be used when stacking above 250".
- Cascade Cast Pad is standard.

DAMAGE REDUCTION OPTIONS

- 180° mechanical stop group
- Load Cushion™—hoist system accumulator that absorbs shocks, reducing the clamp force required to handle the load
- Tilt Control automatically controls the angle of the mast and pad, aligning the pad with the roll and eliminating expensive product damage
- Light Bar Kit and Multi-Setting Pressure Relief Valve—light bar shows the pressure setting in use when installed with the relief valve

INSTALLATION KIT

Catalog Order No.
681061

HYDRAULIC FLOW AND PRESSURE

Minimum Flow	Recommended Flow	Maximum Flow (rotate)	Maximum Flow (clamp)	Maximum Pressure
5 GPM	7 GPM	10 GPM	10 GPM	2,300 PSI/159 bar

HYDRAULIC FUNCTIONS

Model	Hydraulic Functions	Truck Auxiliary Valves Required
Fixed Short Arm	2	2

ROTATOR SPECIFICATIONS

Rotator Speed	Rotator Torque
7.5 RPM @ 10 GPM	37,000 Inch-Lbs. @ 2,300 PSI